

DRS™ NOVA v6.0

Featuring **MTai FrameGen**

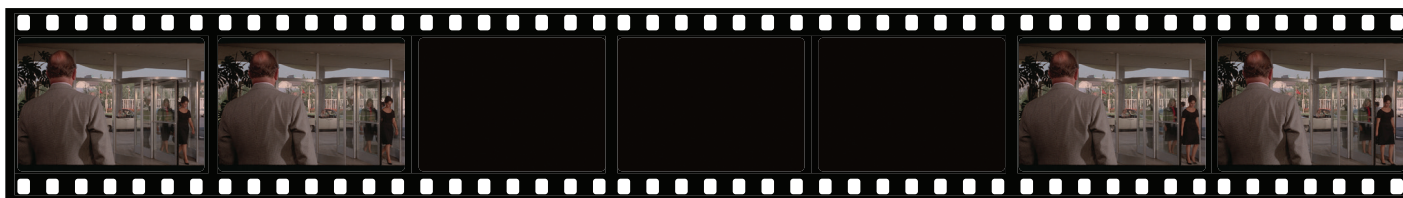
MTI Film introduces DRS™Nova v6.0, the premier industry-standard software for digital film restoration, now featuring MTai FrameGen. With 30 years of refinement, DRS™Nova offers a comprehensive suite of automated and manual tools tailored to restoration artists' needs.

MTai FrameGen

MTai FrameGen harnesses the power of generative AI to recreate missing frames from jump cuts and frame slugs, providing restoration capabilities unmatched by other image-based clean-up tools. This innovative addition, combined with existing DRS™Nova tools for Paint, Dewarping, and Deflicker, empowers artists to achieve unprecedented levels of precision and quality through the use of AI in their restoration projects.

Before **MTai** FrameGen

Topkapi, by permission of MGM Studios.



After **MTai** FrameGen



Detail of **MTai** generated missing frames



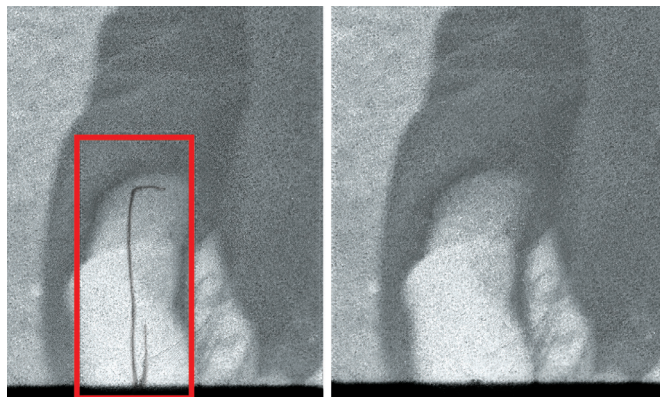
Learn what DRS™Nova can do to improve your digital film restoration.

mtifilm.com/drs-nova sales@mtifilm.com

DRS™Nova applications run on Windows 10 and Windows 11. Hardware not included.

DRS™ Nova Advanced Toolset Includes:

Gate Hair Tool



Gate Hair Tool – NEW

Analyzes camera motion for each shot and offers sophisticated inpainting and temporal algorithms for tracking and fixing gate hairs.

Improved Bookmark Events

Simplifies the process of adding a Bookmark event. Allows for the bookmarking of a single frame or range of frames with comments, user defined instructions, and thumbnails.

Enhanced Stabilization

Offers manual or automated tools to repair jitter, gate weave, splice bumps, and other stabilization issues with the Auto-Stabilize tool leveraging camera motion analysis for optimal results.

Debris Filters – Shine and AutoFilter

Shine and AutoFilter automatically detect and repair dust and defects, while Shine provides superior technology for dirt and fleeting scratch replacements.

Camera Motion

Analyzes camera motion for each shot and creates “motion segments”, which can consist of Static, Low, and High motions. The artist can assign different values to each motion segment in tools that support the analysis.

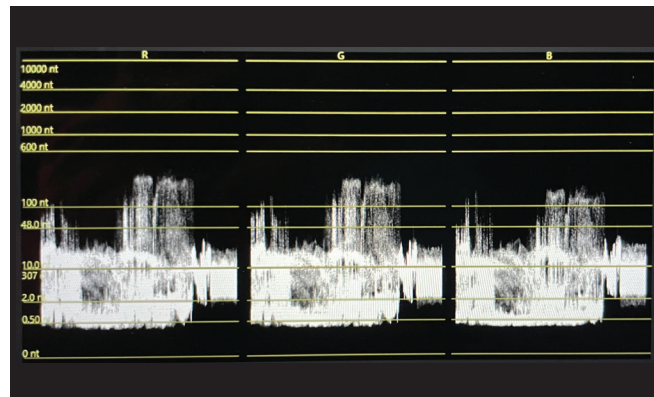
DRS™

Use the DRS™ tool to manually eliminate dust, static dirt, debris, scratches, tears, and replace missing frames.

Paint

Paint or clone from the same or another clip, restore original pixel values, track objects, and more.

Waveform Vector Scope



Waveform Measurement Tool

Featuring an RGB parade to measure code values and NITs, enhancing accuracy and efficiency in restoration workflows.

Deflicker and Mistime

Using Global or Zonal user-defined regions, eliminate density flicker and color fading due to film emulsion aging. The Mistime tool repairs gradient artifacts at the top of the incoming frame and the bottom of the outgoing frame that occur due to laboratory printer light lag.

Scratch

Repair fleeting or persistent scratches with superior results.

Dewarp

Fix geometric distortions caused by film shrinkage and aging using three or more tracking points. For shots with less than three tracking points, the tool provides for the use of “phantom points” that can be anchored to the existing good ones.

3 Layer Registration

Fix misaligned 3-Strip films recorded to a single film element. The tool can reposition the red and blue channels on their X and Y axes to register against the green control channel or, optionally, warp the channels.

Grain and Aperture

Reduce grain of all or discrete color channels and apply aperture correction to sharpen the image.

Create custom grain patterns that can be applied globally in the tool or used in the Paint and DRS™ tools to enhance fixes.



Learn what DRS™ Nova can do to improve your digital film restoration.

mtifilm.com/drs-nova sales@mtifilm.com

DRS™ Nova applications run on Windows 10 and Windows 11. Hardware not included.